

**Pleurothallis apposita** Luer, sp. nov.

Fig. 3

Ety.: From the Latin *appositus*, "in apposition, side by side," referring to the calli of the lip.

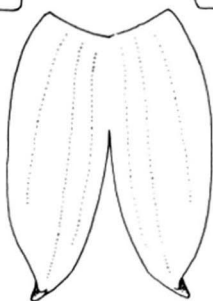
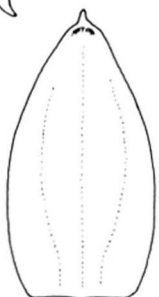
Planta grandis, racemo folio elliptico longi-petiolato breviori, sepalis acutis, petalis oblongis trinerivis, labello oblongo callis ad medium crassis magnis apposisis distinguitur.

**Plant** large, presumably epiphytic, probably caespitose, ramicauls incomplete; roots not seen. Ramicauls slender, presumably erect, more than 10 cm long. **Leaf** erect, coriaceous, elliptical, subacute, the blade 9-13 cm long, 2.5-4 cm wide, cuneate below into a slender petiole 2 cm long. **Inflorescence** racemose, 2-4 slender, subcongested, more or less distichous, simultaneously several-flowered racemes, 7-10 cm long including the peduncle 3 cm long, subtended by a slender spathe 1 cm long, from an annulus 10-12 mm below the abscission layer; floral bracts infundibular, 3 mm long, enclosing the pedicel; pedicels 3 mm long; ovary 2 mm long; **sepals** subcarinate, glabrous, the dorsal sepal elliptical-ovate, subacute, apiculate, concave, 6 mm long, 4 mm wide, 3-veined, the lateral sepals elliptical-oblong, subacute, apiculate, 6 mm long, 2.25 mm wide, connate 1.5 mm, 3-veined; **petals** translucent, oblong, rounded at the apex, 3.25 mm long, 1.5 mm wide, 3-veined; **lip** oblong-subtrilobed, 2.4 mm long, 1.2 mm wide unexpanded, rounded above the middle, the sides below the middle erect, obtuse, with a large, thick pair of parallel calli in apposition below the middle, the base with a rounded cavity, attached to the column-foot; **column** semiterete, stout, 1.5 mm long, the foot thick, 0.5 mm long, the anther, rostellum and stigma subapical.

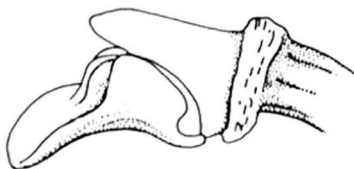
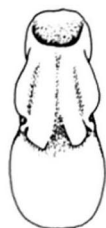
ECUADOR: Without locality, *W. Jameson s.n.* (Holotype: K), C. Luer illustr. 17234.

This species is known only from a collection by Jameson in the nineteenth century. The only data is "Peru," an erroneous assumption applied to many of Jameson's collections from Ecuador. I know of no other collection of this species.

*Pleurothallis apposita* is distinguished by an elliptical leaf with a slender petiole. The few ramicauls present have been broken off about ten centimeters below the spathe. The spathe is small from which two to four several-flowered racemes shorter than the leaf are borne. The sepals and oblong, the three-veined petals are not unusual in the subgenus. The lip, however, is distinct from all others. Filling the lower half is a pair of large, thick calli that nearly touch in the center. The lip cannot be spread without fracturing between the calli,



5 mm



2 mm

5 cm

9  
17334  
28