

roots slender. *Ramicauls* erect, slender, 3–7 cm long, enclosed by a tubular sheath near the middle, and 2–3 other sheaths at the base. *Leaf* erect, coriaceous, narrowly elliptical, subacute, petiolate, 5–11 cm long including the petiole 1–1.5 cm long, 1.5–2 cm wide, narrowly cuneate below into the petiole. *Inflorescence* a slender, erect, congested, distichous, many-flowered raceme, 8–15 cm long including the peduncle 2 cm long, subtended by a spathe 6–8 mm long, from an annulus below the apex of the ramicaul; floral bracts tubular, 1 mm long; pedicels 1 mm long; ovary 1.5 mm long. *Sepals* purple, not widely spread, ovate, obtuse, glabrous externally, cellular-pubescent within, the dorsal sepal 1.75 mm long, 1.25 mm wide, 3-veined, the lateral sepals 1.25 mm long, 1.25 mm wide, 3-veined. *Petals* transversely obovate, flabellate, shallowly concave, 0.5 mm long, 0.6 mm wide, the apex broadly rounded, thickened. *Lip* ovoid, 0.6 mm long, 0.6 mm wide, 0.6 mm deep, shallowly concave anteriorly, the apex obtuse to rounded, the disc thickened, low-callous on the dorsum, the base broadly truncate, hinged to the base of the column. *Column* 0.6 mm long, the foot obsolescent, the anther and the bilobed stigma apical.

**Etymology.** Named for Barry Hammel of the Missouri Botanical Garden, who collected this species.

**Isotypes.** Costa Rica. Heredia, La Selva, Río Puerto Viejo, alt. ca. 100 m, 20 May 1982, *B. Hammel 12374* (AMES, DUKE).

This species, known from a single collection from Costa Rica, is similar to *Stelis cleistogama*, but it differs in significant details. *Stelis hammelii* is characterized by a medium-sized habit with ramicauls shorter than the elliptical, petiolate leaves; a shorter, congested, distichous raceme subtended by a much shorter spathe; inconspicuous floral bracts; and ovate, obtuse sepals not widely spread. The petals and lip are not remarkably different from the pattern frequently seen in the genus.

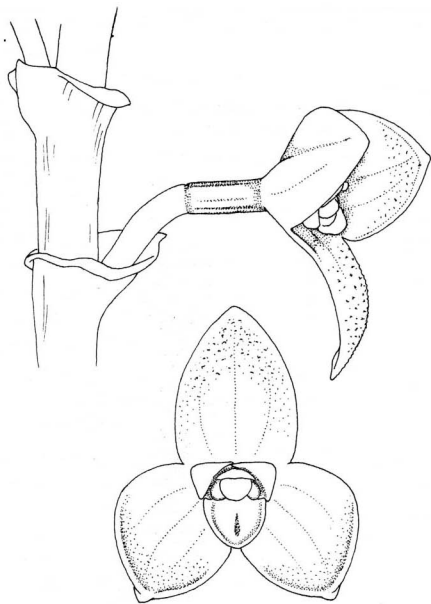
***Stelis hammelii*** Luer, sp. nov. TYPE: Costa Rica.

Heredia: La Selva, Río Puerto Viejo, alt. ca. 100 m, 20 May 1982, *B. Hammel 12374* (Holotype: MO), C. Luer illustr. 17890.

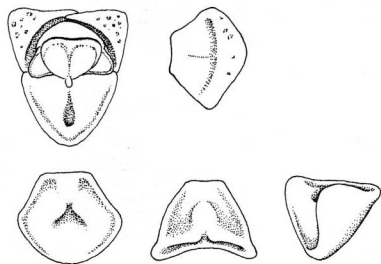
FIGURE 16.

Species haec *S. cleistogamae* Schltr. similis, sed foliis latioribus, racemo disticho densifloro brevior, bracteis floralis parvis tubulosis et spatha parva distinguitur.

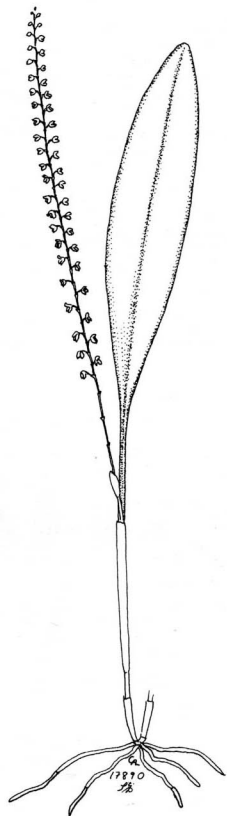
**Plant** medium in size, epiphytic, caespitose;



2 mm



1 mm



5 cm